

***OPUS System***

**Operator-User Performance Support**

**THE OPUS GROUP**

**Wm.J. Garland**

**Department of Engineering Physics  
McMaster University**

**W.F.S. Poehlman**

**Department of Computer Science and Systems  
McMaster University**

**R.J. Wilson**

**Engineering and Computing Services  
Oakville, Ontario**

**A. Bokhari**

**Department of Computer Science and Systems  
McMaster University**

**Graduate Students:**

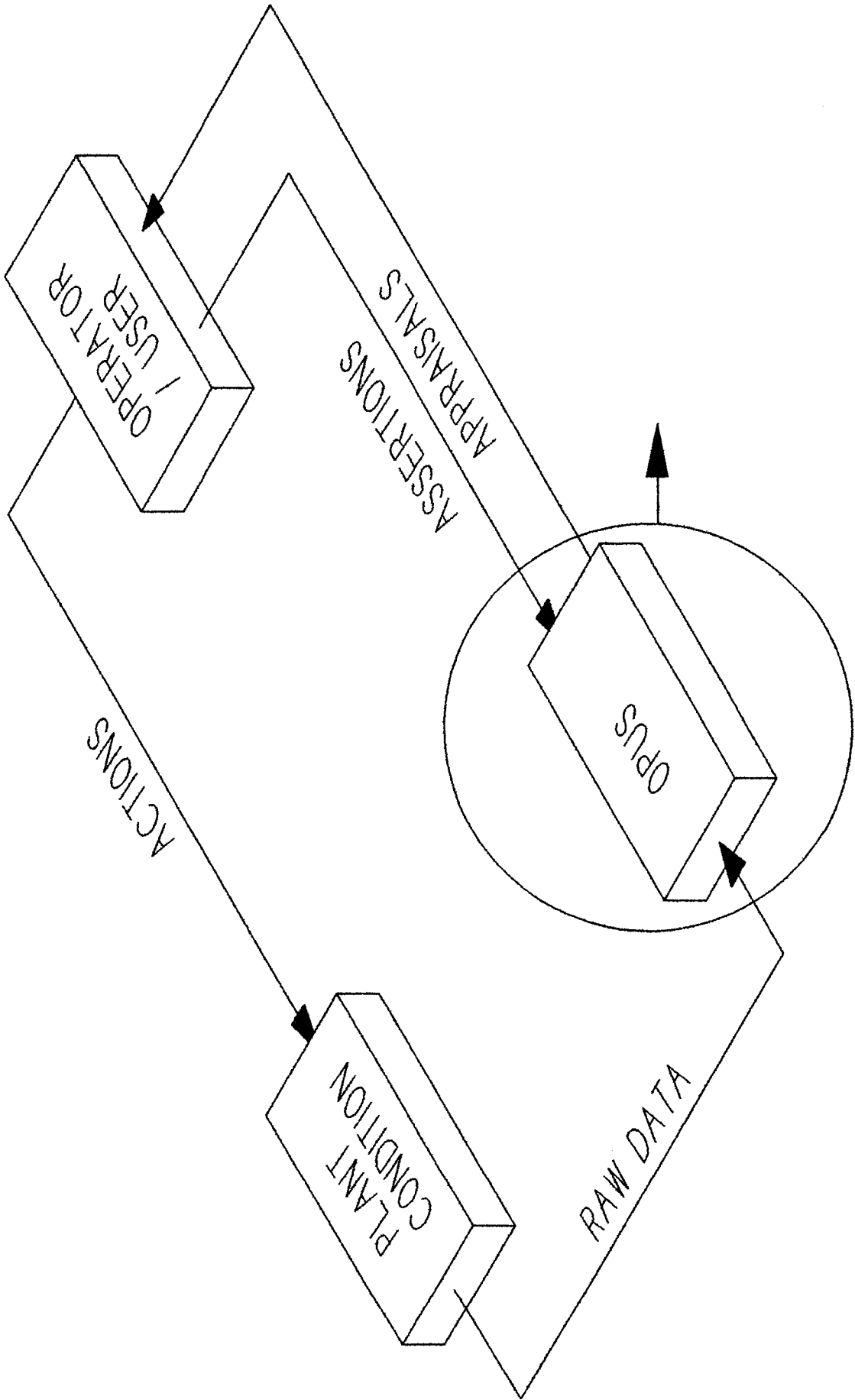
**Charles Baetsen**

**Dewanto Saptodi**

**Ashraf Mahmoud**

## **THE PROBLEM DOMAIN**

- **DISTRIBUTED ARCHITECTURE**
  - **Plant Operations are diverse and multi-faceted**
  - **Events can happen anywhere**
  - **The plant is ENGINEERED**
    - . **Decomposition**
    - . **Functional Abstraction**
    - . **Temporal Abstraction**
    - . **Procedural**
    - . **Pre-enumerated**
- **Asynchronous behaviour**
- **Higher level reasoning via human-centred control strategy**
- **Real time operation**
- **Disparate knowledge bases**
- **Multi-disciplinary**

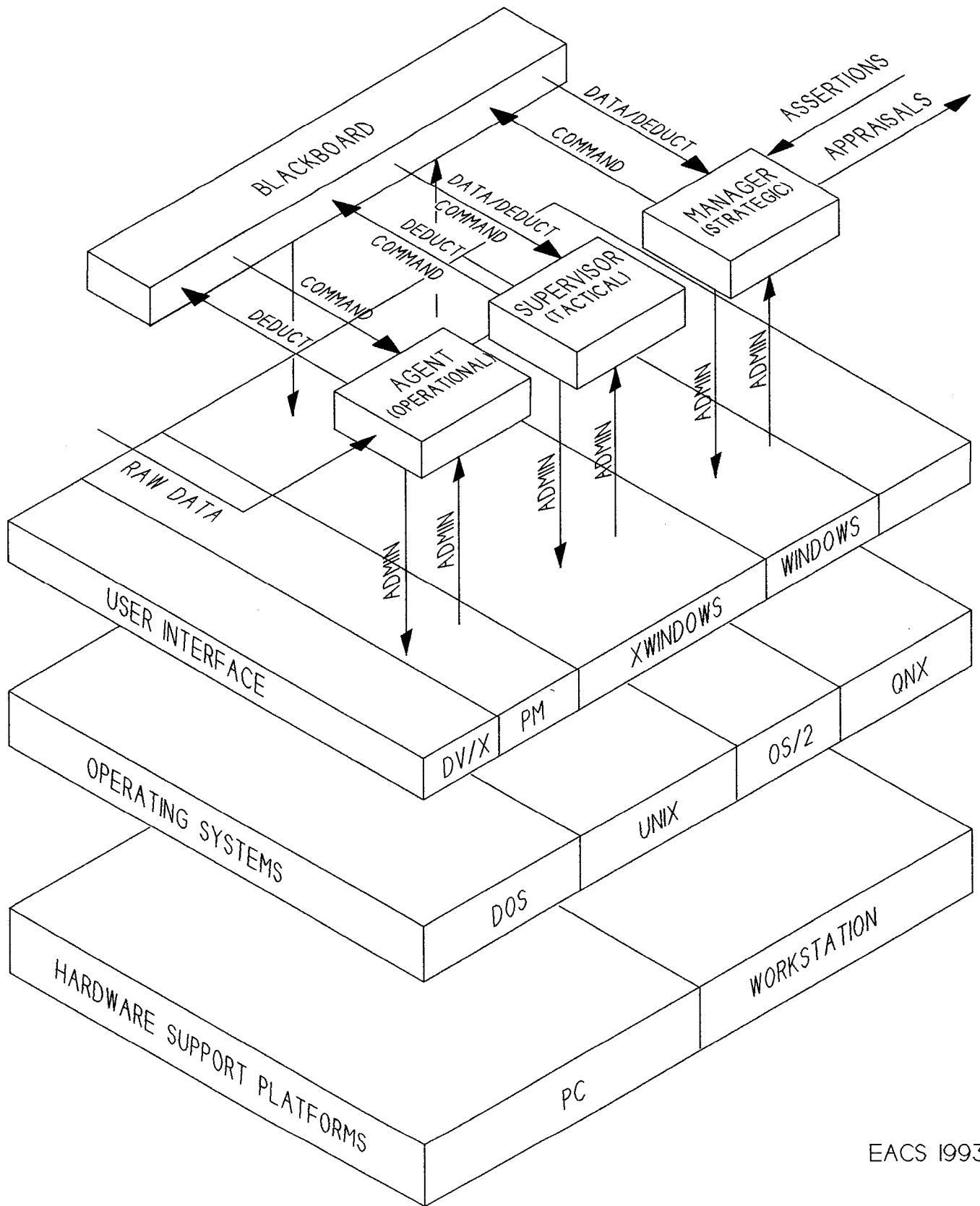


***OPUS System***

**Operator-User Performance Support**

## **SOLUTION STRATEGY**

- **PERFORMANCE SUPPORT**
- **OPERATOR CONTROL**
- **MODULAR SYSTEM**



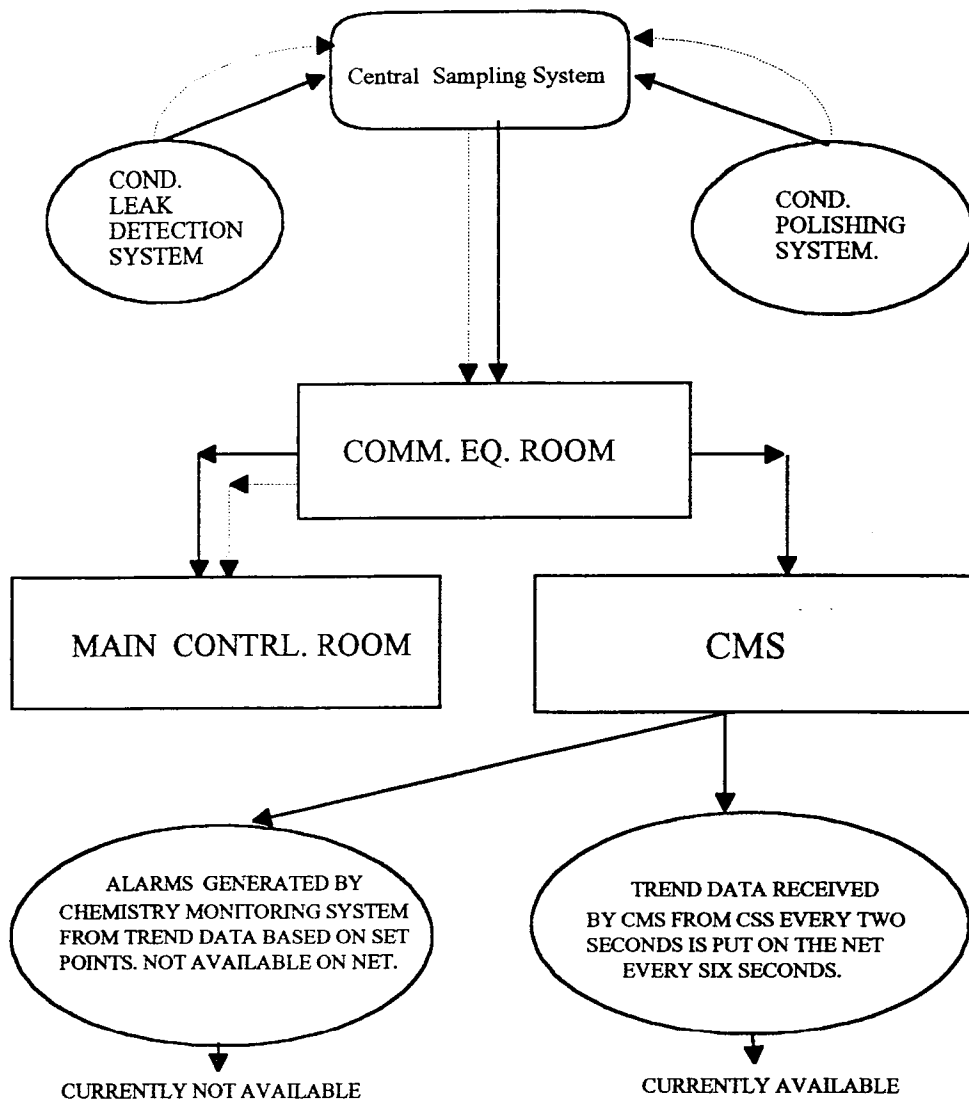
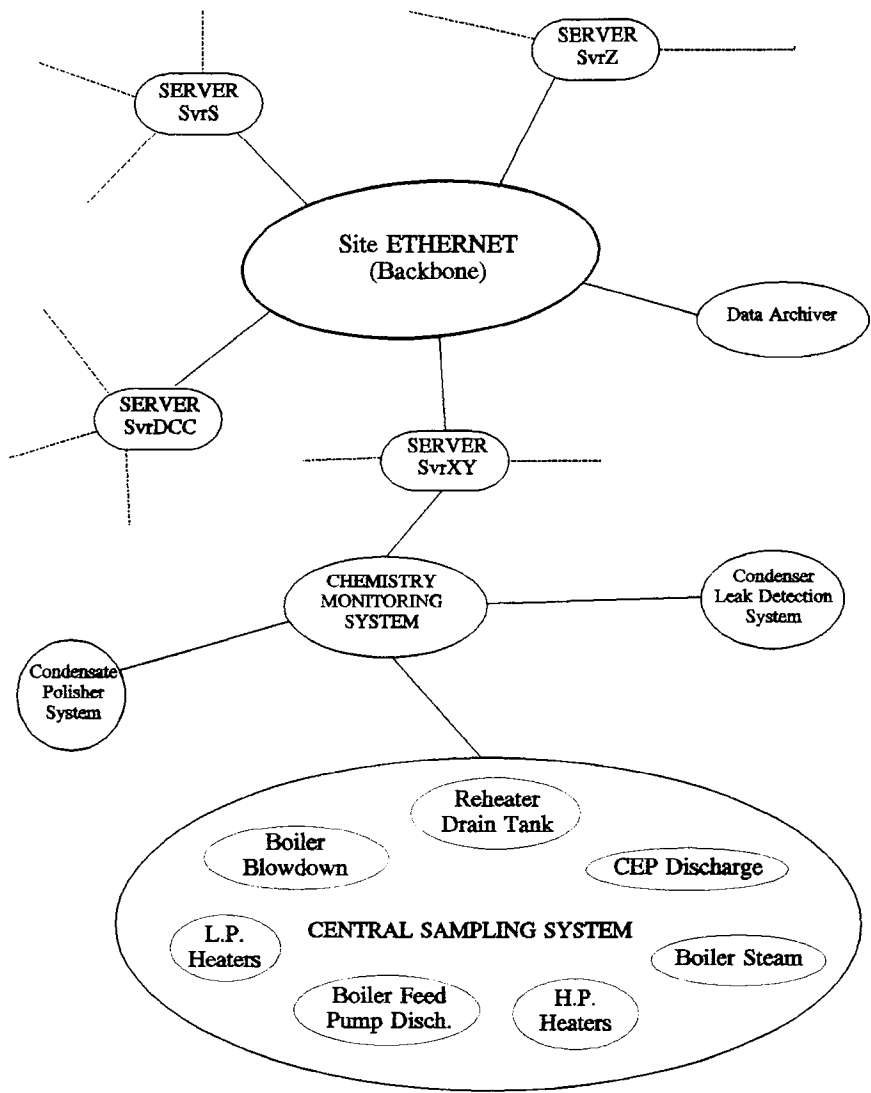


FIGURE: SHOWING FLOW OF TREND AND ALARM DATA.

LEGEND: ALARM DATA  →

TREND DATA  →



# *OPUS System*

Operator-User Performance Support

## **SAMPLE MODULE CODE**

```
int main()
{
  while(!quit)
  {
    my_obj = obj_read();

    switch(my_obj)
    {
      case hMail:
        ProcessMailEvent();
        break;

      case hTimer:
        ProcessTimerEvent();
        break;

      case hKeyboard:
        ProcessKeyboardEvent();
        break;
    }

  }

  DoHouskeeping();
  return(0);
}
```